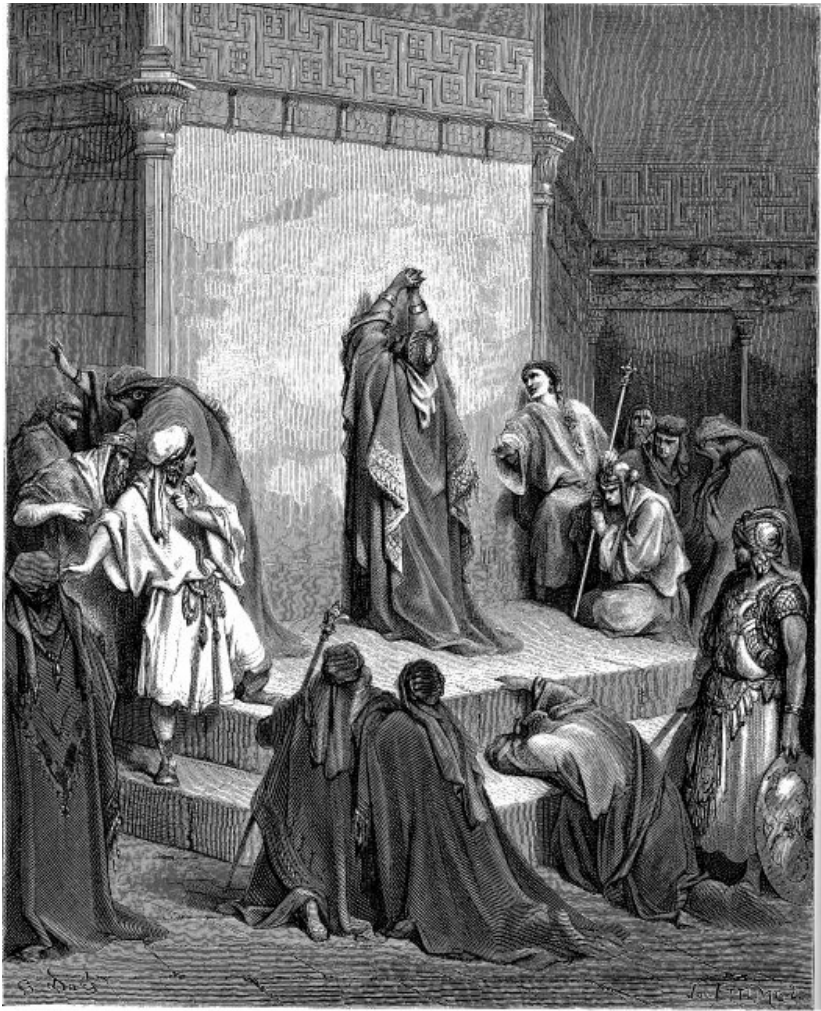


# STANLEY M. HOFFMAN

## O Absalom



*for TTBB Chorus unaccompanied*

**GalaxyMusic**  
CORPORATION  
A division of ECS Publishing Group

# O Absalom

for TTBB Chorus unaccompanied

2 Samuel 18:33 (KJV)

Stanley M. Hoffman

Adapted by the composer

**Dirge 1** Slowly and mournfully ♩ = 58

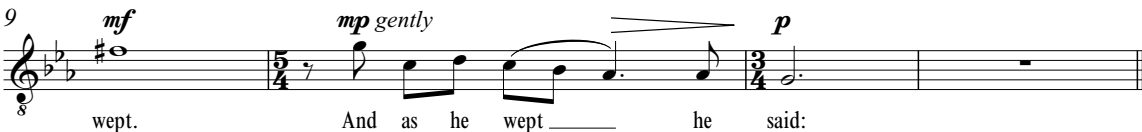
Tenor 1  
(Section  
or Solo)



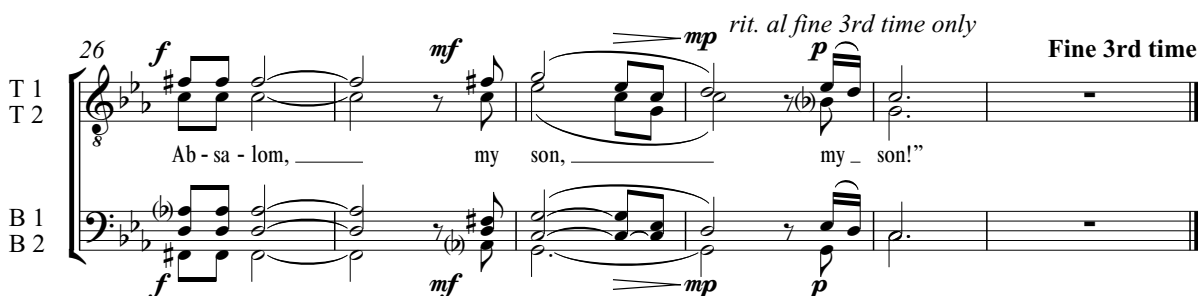
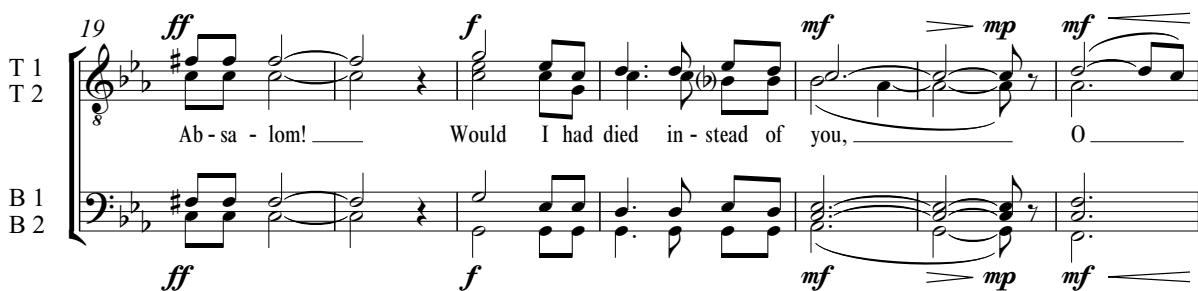
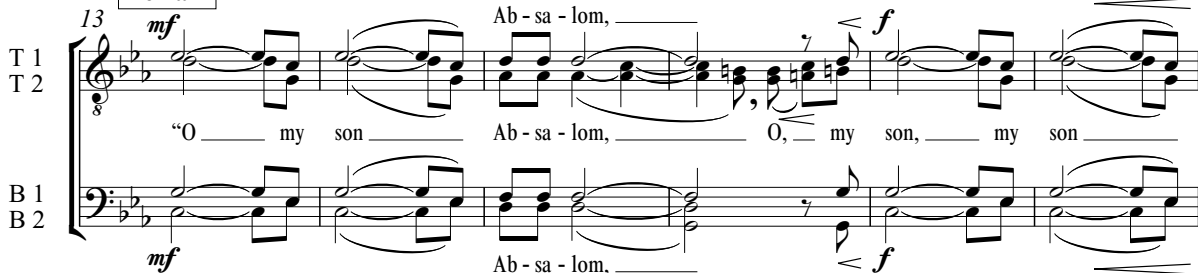
T 1  
(Sec.  
or Solo)



T 1  
(Sec.  
or Solo)



## Refrain



32 *Dirge 2* *p*

T 1 2. When Da-vid heard that his son \_\_\_\_\_ was dead, \_\_\_\_\_ he was deep-ly moved.

T 2 2. When Da-vid heard that his son \_\_\_\_\_ was dead, \_\_\_\_\_

B 1 2. When Da-vid heard \_\_\_\_\_ that his son \_\_\_\_\_ was

B 2 2. When Da-vid heard \_\_\_\_\_ that his

Reh. Kbd.

36

T 1 \_\_\_\_\_ He went up to the cham - ber \_ o'er the gate and \_

T 2 he was deep-ly moved. \_\_\_\_\_ He went up to the cham - ber \_ o'er the

B 1 dead, \_\_\_\_\_ he was deep-ly moved. \_\_\_\_\_ He went up to the

B 2 son \_\_\_\_\_ was dead, \_\_\_\_\_ he was deep-ly moved. \_\_\_\_\_

Reh. Kbd.

40 *mf* *mp gently* *p* **To Refrain**

T 1 wept. And as he wept he said:

T 2 gate and wept, he said:

B 1 cham - ber o'er the gate, he said:

B 2 He went up to the cham - ber o'er the gate, he said:

Reh. Kbd.

44 *Dirge 3 p*

T 1 3. When Da - vid heard that his son was dead, he was deep - ly moved.

T 2

B 1

B 2

48

T 1 He went up to the cham - ber o'er the gate and

T 2

B 1

B 2

52 *mf* *mp gently* *p* **To Refrain**

T 1 wept. And as he wept he said:

T 2

B 1

B 2

May 26, 2014  
c. 5'15"

Stanley M. Hoffman (b. 1959): For information about the composer, visit his Web site. <[www.stanleymhoffman.com](http://www.stanleymhoffman.com)>